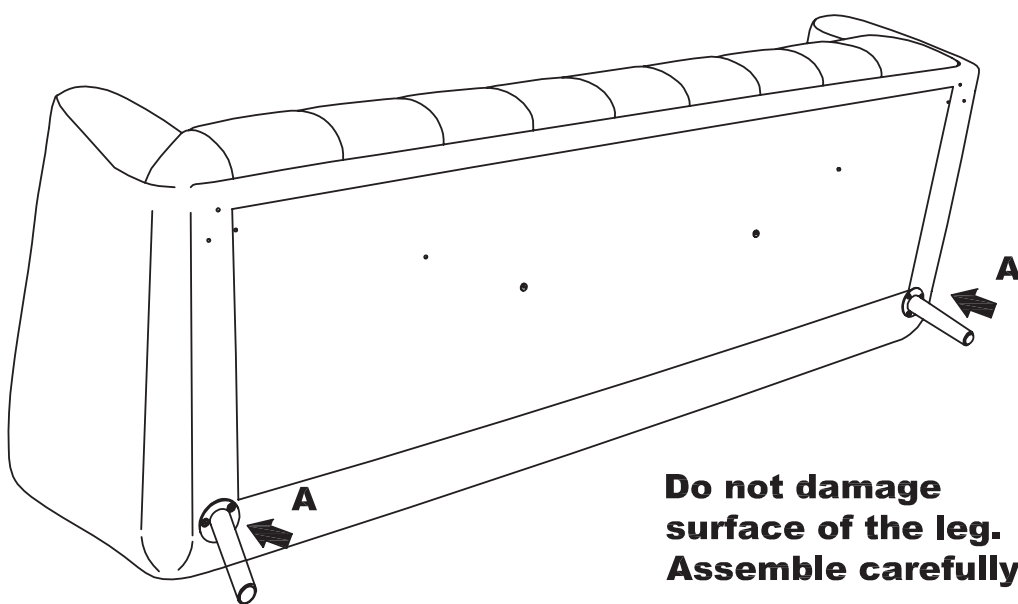
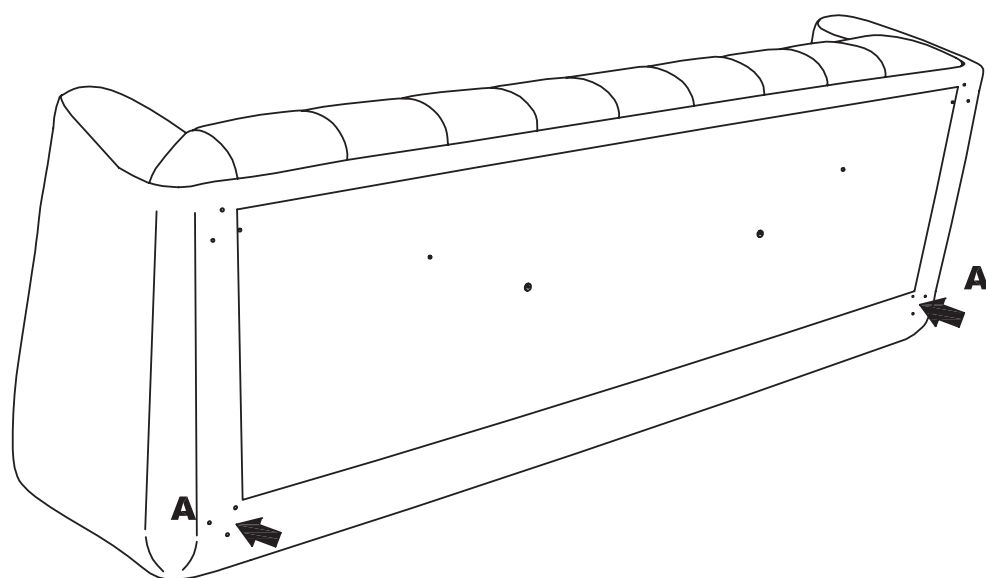


# ETOILE

2/3 seaters sofa

**Insert the screw into the metal bracket (in accordance with the sequence 1;2;3). Then tighten the screw to a depth of approx. 15 mm. Then screw the bolts (screw gradually), keeping attention not to damage the surface of leg.**



**Do not damage surface of the leg. Assemble carefully.**

**Check attachment screws**

## "Step 1"

x2

Hex key "4"

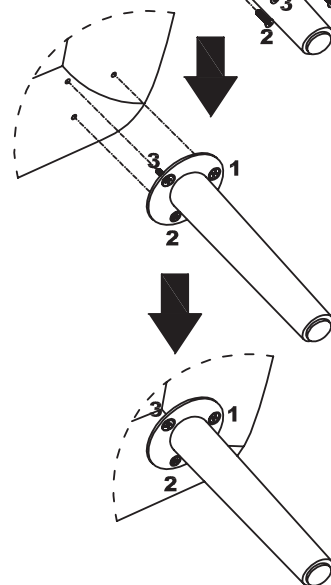
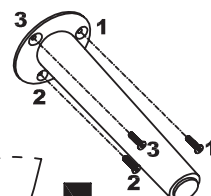


x6

"A"

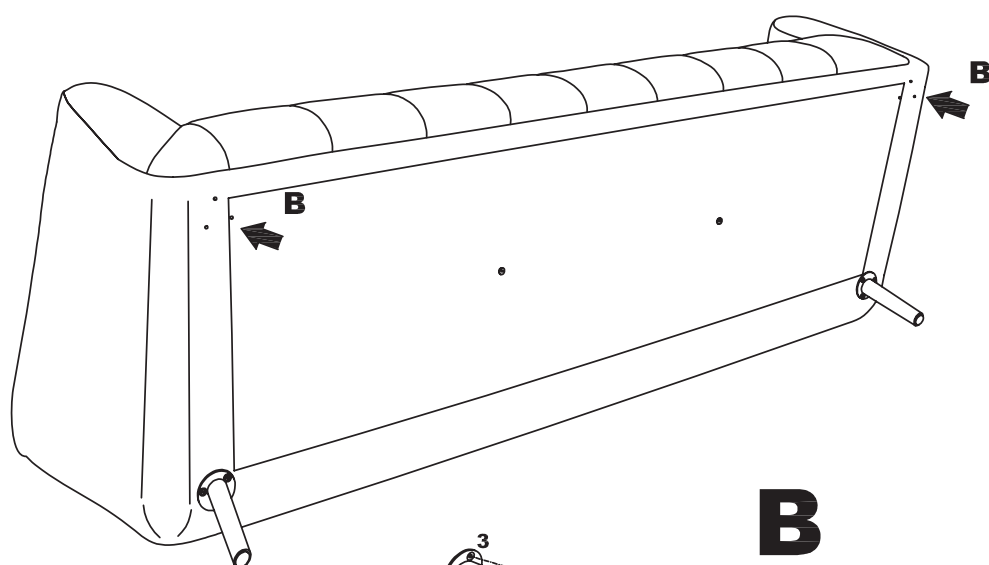


**A**



**1**

## "Step 2 for front wood leg"



**"Step 2"**

x2

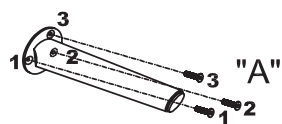
x6

"A"

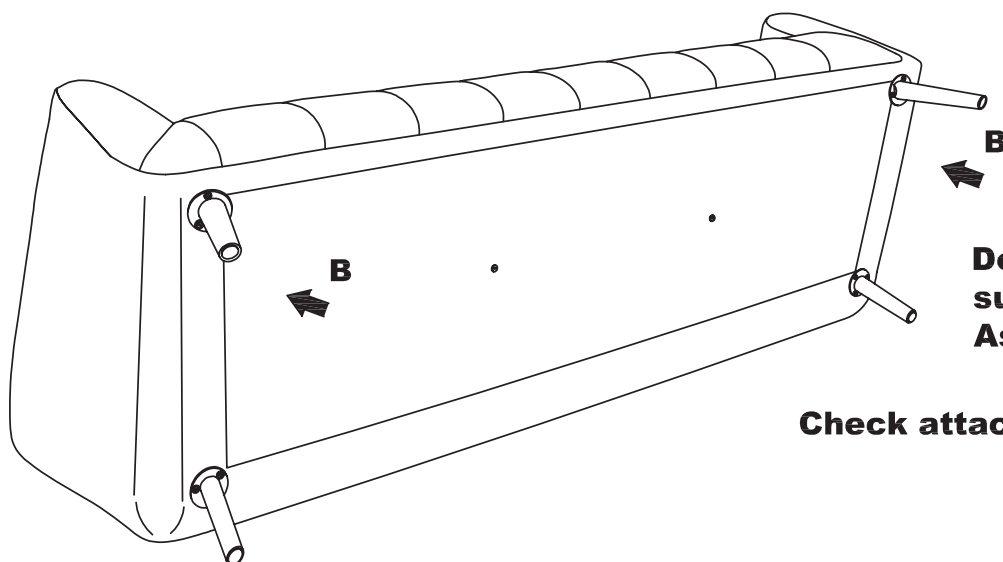
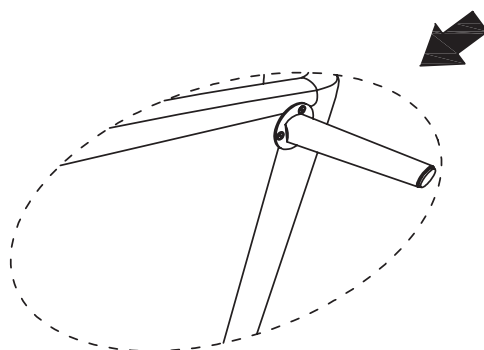
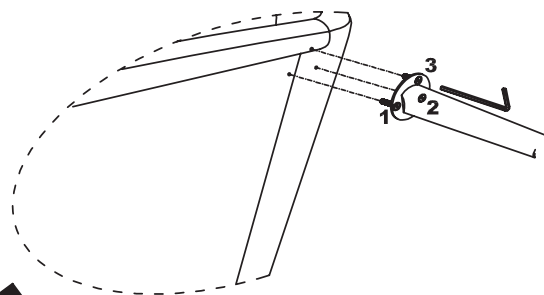
Hex key "4"



**B**



Hex key "4"



**Do not damage  
surface of the leg.  
Assemble carefully.**

**Check attachment screws**

**2**